

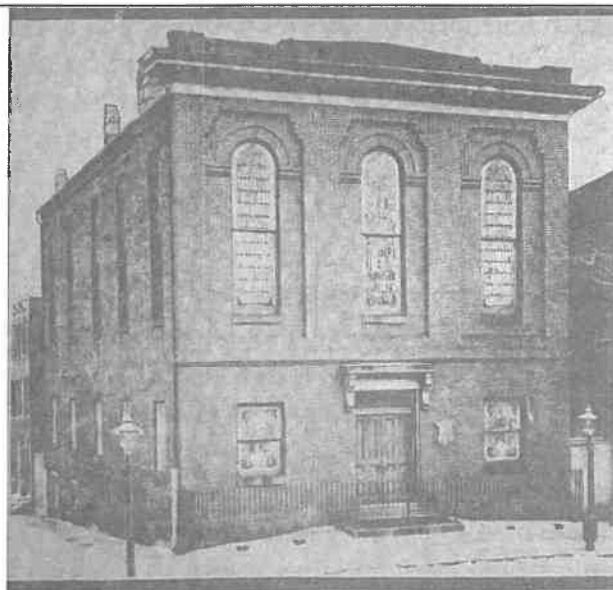
# Emmanuel Lutheran News

January, 2018

## ANNIVERSARY SUNDAY

WORSHIP  
&  
POTLUCK/VOTERS MEETING  
SUNDAY  
JANUARY 21

Bring a dish to share for our potluck meal after worship.  
All are welcome!



EMMANUEL EVANGELICAL LUTHERAN CHURCH

Our 1st building was located at Pierce and Schroeder—  
presently near MLK and rt40—and was used until 1914.

### 2017-18 Theme

*Walk according to your calling: with humility, gentleness,  
patience, love, unity, and peace. Ephesians 4:1-3*

\*\*\*\*\*

*Emmanuel is*

*One Family, Many Peoples  
Growing as Disciples of Jesus and  
Children of God...*

*through*

**WORSHIP**

(Team Leader: Joni Mercer and Ruth Heilman)

**Our WORSHIP goals are:** that people would *understand*  
worship, *participate* in worship, and *enjoy* worship.

### Sunday Morning Schedule—ONE SERVICE @10

9am Faith Formation/Sunday School

Begins sharply and lasts until 9:45.

10 Worship Service with Holy Communion.

### 130th Anniversary Service and Potluck/Voters Meeting

Sunday, January 21 at 10am. Come and enjoy a wonderful worship celebration, with former Emmanuel pastor, Rev. Robert Mordhorst, as guest preacher. Bring a dish to share and stay for the potluck meal and meeting—to hear and participate in the work of our congregation.

### Webcasts

Can't join us in person? Connect with us on the web each Sunday at [www.emmanuelbaltimore.org](http://www.emmanuelbaltimore.org).

Mobile device? Download the "Sunday Streams" app and log in with: [emmanuelbaltimore.org](http://emmanuelbaltimore.org).

### Urdu Language @ 7:30pm Worship (Pr. Robson)

Feel free to consider supporting this ministry financially using the DONATE button at [emmanuelbaltimore.org](http://emmanuelbaltimore.org). and designating your gift to "Evangelistic Outreach Minister".

*through the*

**FELLOWSHIP OF BELIEVERS**

(Team Leader: Trish May)

**Our FELLOWSHIP goals are:** that people would *know and care* for one another, "generationally" *pass on* the faith, and *support* the greater church.

### Reading Ahead

Each week you are encouraged to read ahead the Gospel lesson for the upcoming Sunday. Read and meditate on it daily.

Beginning      January 1: Mark 1:4-11  
                      January 8: John 1:43-51  
                      January 15: Mark 1:14-20  
                      January 22: Mark 1:21-28  
                      January 29: Mark 1:29-39

**New Midweek Bible Study:** Wednesdays 8:15am  
Does a 45 minute Bible Study on Wednesday

# January 2018

Sun	Mon	Tue	Wed	Thu	Fri	Sat
<p><b>9:00 am Faith Formation</b>  <b>10:00am Worship</b>  <b>1pm Oromo Lutheran</b>  <b>7:30pm Urdu /Hindi Worship</b></p>	<p>1 7:30 pm N.A.</p> <p><b>B-Day:</b> Bertha Monroe, Aviana Johnson</p>	<p>2</p> <p><b>B-Day:</b> Ed Lohmeyer, Katherine Lentsch, Robert Reese</p>	<p>3 8:00 pm A.A.</p> <p>8:15am Bible Study</p> <p><b>B-Day:</b> Bruce Cameron</p>	<p>4 3:00 pm Junior Choir 7:00 pm Handbell Choir 7:45 pm Senior Choir</p> <p><b>B-Day:</b> Michael Hartman, Scarlett Wardell</p>	<p>5 8:30 am ELS Chapel</p>	<p>6 8:00 pm N.A.</p> <p><b>B-Day:</b> Michael Keane</p>
<p>7 First Sunday after the Epiphany</p> <p><b>B-Day:</b> Beverly Blackman, Joan Voll, Jennifer Boothe, Danielle Faust.</p>	<p>8 7:30 pm N.A.</p> <p><b>B-Day:</b> Tasha Cook, Jim Heilman, Emma Gutberlet</p>	<p>9</p>	<p>10 8:00 pm A.A.</p>	<p>11 3:00 pm Junior Choir 7:00 pm Handbell Choir 7:45 pm Senior Choir</p>	<p>12 8:30 am ELS Chapel</p> <p><b>B-Day:</b> August Doede</p>	<p>13 8:00 pm N.A.</p> <p><b>B-Day:</b> Nathaniel Hauser Jr.</p>
<p>14 Second Sunday after the Epiphany</p> <p><b>B-Day:</b> Cecilia Durham, Ellen Croll</p>	<p>15 7:30 pm N.A.</p>	<p>16 11am Sandtown Prayer Meeting</p> <p><b>B-Day:</b> Delores Donnelly</p>	<p>17 7:00 Council Meets 8:00 pm A.A.</p>	<p>18 3:00 pm Junior Choir 7:00 pm Handbell Choir 7:45 pm Senior Choir</p>	<p>19 8:30 am ELS Chapel</p> <p><b>B-Day:</b> Lee Knight, Briana Wilson</p>	<p>20 8:00 pm N.A.</p> <p><b>B-Day:</b> Caleb Harrison</p>
<p>21 Third Sunday after the Epiphany Anniversary Sunday</p>	<p>22 7:30 pm N.A.</p>	<p>23</p>	<p>24 8:00 pm A.A.</p> <p><b>B-Day:</b> Heather Graddy, Rebekah Foxworth, Rebecca Schultheis.</p>	<p>25 3:00 pm Junior Choir 7:00 pm Handbell Choir 7:45 pm Senior Choir</p> <p><b>B-Day:</b> Ryan Donnelly, Aaron Hartmann</p>	<p>26 8:30 am ELS Chapel</p> <p><b>B-Day:</b> Charles Boothe</p>	<p>27 8:00 pm N.A.</p> <p><b>B-Day:</b> Valerie Eckels</p>
<p>28 Fourth Sunday after the Epiphany</p>	<p>29 7:30 pm N.A.</p> <p><b>B-Day:</b> Victor Amah</p>	<p>30</p> <p><b>B-Day:</b> Richard Foks, Barbara Diefenbach, Lindsay Barnabae</p>	<p>31 8:00 pm A.A.</p> <p><b>B-Day:</b> Lou Jean Liem, William Liberto.</p>			

## **In Honor**

**Emmanuel Lutheran School in honor of Evelyn Nolan from her sister, for a Christmas gift.**

**By:** Herb and Lois Brettschneider

### **The Lutheran Church—Missouri Synod | Stewardship Ministry**

#### **Newsletter Article: January 2018**

It's a new year. It's a time when we take stock of the year past in order to improve the year to come. It's a time when we sit down to plan and implement what we want to accomplish and even change. Part of that is planning our stewardship for the coming year.

Often we find this difficult and daunting and even joyless. But it doesn't have to be. In fact, it is really quite simple and full of joy. So here are some tips to make that planning less stressful. You begin by answering these three questions: Who are you? To whom do I give? And how much?

So, who are you? The Table of Duties in the Small Catechism informs us. Are you a hearer of God's Word? Are you a citizen of society? Are you a member of a family? Stewardship covers these three estates: church, society, family. We don't particularly struggle to give to society or family. Our struggles, our difficulties and our questions arise in giving to the church.

So, what is our duty as members of the church with regard to giving? The Table of Duties, again, gives us a guide. If you are a hearer, a member of the church who receives instruction, St. Paul taught: "Anyone who receives instruction in the word must share all good things with his instructor" (Gal. 6:6). This means the local congregation is primary.

Your pastor is the one called to preach the Gospel to you and administer the Lord's blessed sacraments to you. Your congregation is the place where those things happen. Thus, when God calls us to give to the church, He has the local congregation in mind. For "the Lord has commanded that those who preach the gospel should receive their living from the gospel" (1 Cor. 9:14).

How much do we give to the local congregation? Our only instructions are these: to give regularly (1 Cor. 6:1-2), proportionally (1 Cor. 16:1-2; 2 Cor. 8:12), and generously (2 Cor. 8:20) of our first fruits (Gen. 4:4; Prov. 3:9; Lev. 27:30) with a spirit of eagerness (2 Cor. 9:2), earnestness (2 Cor. 8:7), cheerfulness (2 Cor. 9:7), and love (2 Cor. 8:23).

In other words, giving to the church is not to be an afterthought, given after everything else is spent. In this way, it is deliberate. We give regularly – weekly, bi-weekly, monthly, quarterly, or yearly – keeping in mind our own strengths, weaknesses, and limitations. We set it aside beforehand – before anything else is spent.

From those first fruits, we set aside a proportionate and generous amount. Ten percent was the standard for the Israelites. This was a command for the ancient Israelites. We can give as much as we want, but ask yourself: do we really want to be less generous than was commanded of the Israelites? Is the job of the New Testament Church bigger or smaller than the job given to Israel?